

A black and white photograph of a woman with dreadlocks smiling and hugging a young boy in a kitchen. The woman is on the left, and the boy is on the right, leaning into her. They are both smiling and appear to be in a joyful moment. The background shows kitchen cabinets and a doorway.

Children and Learning Service Performance Report

March 2023

A city of opportunity where everyone thrives



Contents

A city of opportunity where everyone thrives

Contents



Section	Page
Effective assessment and intervention	5
Purposeful Direct Contact	7
Management Support for better practice	9
Right Service, Right Time	11
Robust corporate parenting	13
Quality Assurance	16
KPI updates	18



Performance

A city of opportunity where everyone thrives

Effective Assessment and Intervention



Overview highlighting February '23

Indicator	Jun-22	Jul-22	Aug-22	Sep-22	Oct-22	Nov-22	Dec-22	Jan-23	Feb-23	Target	RAG	Southampton 21/22	Statistical Neighbours	South East	England
Number of referrals in the month	334	325	286	314	276	396	298	343	330	N/A	●	N/A	N/A	N/A	N/A
Percentage of re-referrals within 12 months	24% (79/334)	26% (83/325)	28% (79/286)	30% (93/314)	27% (75/276)	26% (104/396)	30% (89/298)	27% (94/343)	25% (81/330)	23%	●	27%	21%	26%	21%
Number of referrals into Early Help	203	149	196	187	183	161	179	220	172	N/A	●	N/A	N/A	N/A	N/A
Number of Early Help assessments completed	146	162	99	106	92	155	84	101	113	TBC	●	N/A	N/A	N/A	N/A
Percentage of C&F assessments completed within 45 working days	86% (256/296)	72% (209/291)	78% (289/369)	61% (233/380)	70% (203/289)	70% (248/356)	78% (255/326)	86% (276/322)	84% (264/316)	90%	●	86%	87%	89%	88%

Analysis: There was a decrease in the percentage of child re-referrals from 27% in January to 25% in February, however this is still just short of our local target of 23%.

The number of referrals into early help decreased from 220 in January to 172 in February. Despite this the number of early help assessments completed increased from 101 in January to 113 in February. There are not internal targets or comparator data however data to insight have been awarded DfE funding to develop a set of national standard measures in early help.

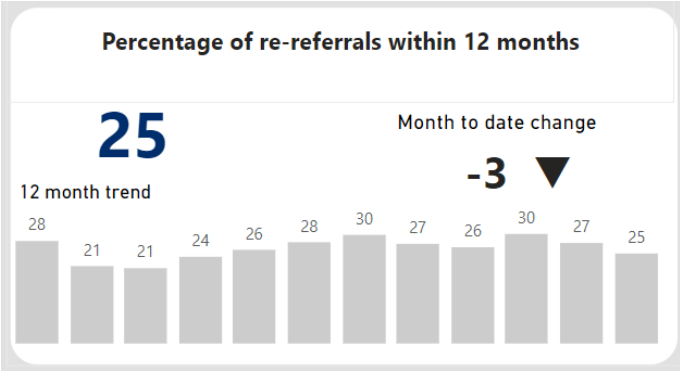
The percentage of C&F assessments completed in 45 working days decreased from 86% in January to 84% in February however still represents a significant improvement on assessment timeliness figures in late 2022.

Effective Assessment and Intervention

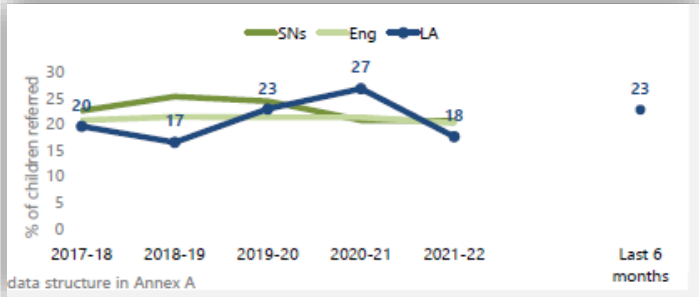


Re-referrals

KPI Dashboard (Feb '23)



ChAT (as at 6th March)



Analysis: For the priority area 'effective assessment and intervention' we have chosen to highlight the re-referrals figure which has seen a month on month decrease since a 12 month high point of 30% in December. The service and data team worked together to dip sample cases in this cohort and identified that a proportion of early help cases were erroneously included in the report. This has been addressed and we are now confident on data quality (monthly performance and CHaT data broadly align). Alongside this, we know from our recent CRS audit that there are opportunities to change practice which, if implemented, could have a further impact upon re-referral rates.

Purposeful Direct Contact



Overview highlighting February '23

Indicator	Jun-22	Jul-22	Aug-22	Sep-22	Oct-22	Nov-22	Dec-22	Jan-23	Feb-23	Target	RAG	Southampton 21/22	Statistical Neighbours	South East	England
Percentage of children subject to Child Protection Plan for whom a visit has taken place within last 10 working days	87% (369/426)	83% (324/389)	82% (320/389)	94% (332/355)	87% (275/315)	91% (274/301)	93% (282/302)	95% (274/288)	93% (279/301)	95%	●	N/A	N/A	N/A	N/A
Percentage of children subject to Child Protection Plan for whom a visit has taken place within last 4 weeks (20 Working Days)	98% (419/426)	96% (373/389)	98% (380/389)	98% (348/355)	97% (307/315)	99% (297/301)	99% (299/302)	99% (286/288)	98% (294/301)	100%	●	N/A	N/A	N/A	N/A
Percentage of CLA for whom a visit has taken place within statutory timescales (6 weeks or less visits)	85% (473/554)	85% (470/554)	81% (449/551)	84% (462/548)	86% (472/552)	89% (494/558)	86% (465/543)	81% (447/553)	79% (431/545)	90%	●	N/A	N/A	N/A	N/A
Percentage of children with an active Child in Need Plan not allocated to CWD for whom a visit has taken place within last 6 weeks (CIN*)	94% (578/618)	93% (583/624)	95% (584/618)	94% (585/621)	95% (589/621)	97% (624/642)	95% (615/648)	98% (574/584)	98% (527/538)	TBC	●	N/A	N/A	N/A	N/A

Analysis: CP Visiting within ten working days decreased from 95% in January to 93% in February, however this still represents strong performance and is exceeding our local target of 90%.

CLA visiting within six weeks remains an area of improvement with a decrease from 81% in January to 79% in February, falling short of our local target of 100%.

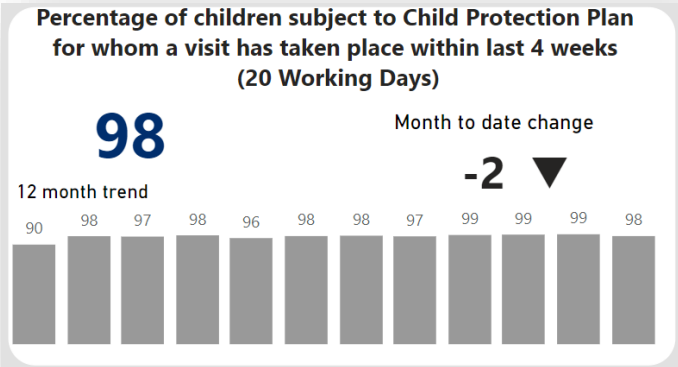
There is no regional or national benchmarking for our visiting KPI's.

Purposeful Direct Contact



CP Visiting

KPI Dashboard (Feb '23)



ChAT (as at 6th March)



Analysis: For the priority area 'Purposeful Direct Contact' we have chosen to highlight the CP visiting in four weeks figure which has remained consistently high, despite falling short of our local target of 100%.

When comparing our month of February CP visiting figure of 98% to the ChAT used to support the self evaluation, we can see the figure is similar but our ChAT as at 6th March was also 98%. The child level data is being circulated as part of our services data quality improvements ahead of annual conversation.



Overview highlighting February '23

Indicator	Jun-22	Jul-22	Aug-22	Sep-22	Oct-22	Nov-22	Dec-22	Jan-23	Feb-23	Target	RAG	Southampton 21/22	Statistical Neighbours	South East	England
Percentage of children who had their supervision and was within the timescales	71% (1708/2395)	70% (1708/2443)	72% (1728/2416)	69% (1627/2358)	71% (1655/2323)	75% (1792/2397)	79% (1850/2339)	82% (1920/2354)	80% (1846/2308)	80%	●	N/A	N/A	N/A	N/A
Percentage of children with an active Child in Need Plan (not allocated to CWD) who had their supervision and was within the timescale	76% (472/618)	75% (471/624)	80% (496/618)	78% (483/621)	84% (523/621)	90% (576/642)	86% (560/648)	93% (546/584)	90% (486/538)	90%	●	N/A	N/A	N/A	N/A
Percentage of CPP who had their supervision and was within the timescale	91% (387/426)	83% (323/389)	89% (345/389)	85% (302/355)	88% (276/315)	95% (287/301)	94% (284/302)	93% (268/288)	96% (290/301)	95%	●	N/A	N/A	N/A	N/A
Percentage of CLA who had their supervision and was within the timescale	82% (454/554)	83% (459/554)	81% (447/551)	78% (430/548)	76% (420/552)	73% (409/558)	76% (413/543)	86% (477/553)	86% (466/545)	95%	●	N/A	N/A	N/A	N/A
Percentage of Care Leavers who had their supervision and was within the timescale	25% (52/218)	25% (57/226)	78% (165/212)	39% (86/221)	44% (90/204)	51% (128/251)	60% (152/252)	45% (115/252)	86% (239/279)	90%	●	N/A	N/A	N/A	N/A

Analysis: Supervision performance remains strong across the different service areas, with all but one child status (CLA) exceeding local targets.

The overall figure of 80% is lower than the individual child status categories because it includes those children currently under assessment, or children open with no plan awaiting closure.

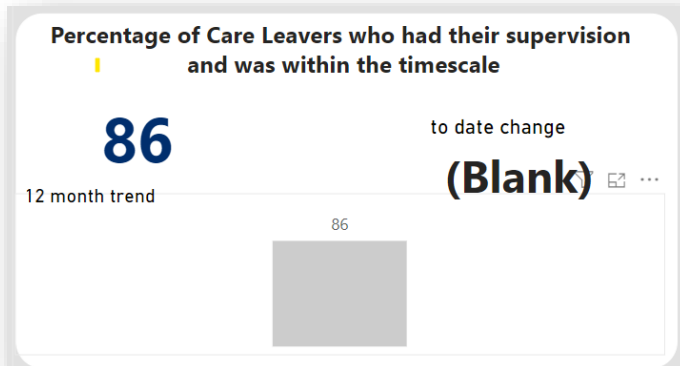
Supervision timescales and reporting is internal only, and there are currently no benchmarking options for local authorities.

Management Support for Better Practice

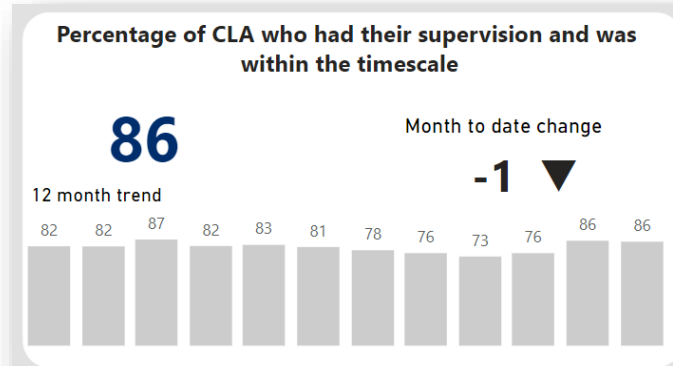


Supervisions

KPI Dashboard (Feb '23)



KPI Dashboard (Feb '23)



Analysis: For the priority area 'Management Support for Better Practice' we have chosen to highlight the care leaver supervision timeliness figure of 86% which has improved considerably from 45% in January (see previous slide). We have also highlighted the CLA supervision which remains below our local target of 90% but has remained consistent with 86% after signs of delay in timescales performance in late 2022.

As mentioned on the previous slide, supervision data does not form part of any benchmarking options, or ChAT tool, however usually forms part of the Ofsted annex A or B information requests during off-site.



Overview (1) highlighting February '23

Indicator	Jun-22	Jul-22	Aug-22	Sep-22	Oct-22	Nov-22	Dec-22	Jan-23	Feb-23	Target	RAG	Southampton 21/22	Statistical Neighbours	South East	England
Percentage of re-referrals within 12 months	24% (79/334)	26% (83/325)	28% (79/286)	30% (93/314)	27% (75/276)	26% (104/396)	30% (89/298)	27% (94/343)	25% (81/330)	23%	●	27%	21%	26%	21%
Number of Early Help assessments completed	146	162	99	106	92	155	84	101	113	TBC	●	N/A	N/A	N/A	N/A
Percentage of C&F assessments completed within 45 working days	86% (256/296)	72% (209/291)	78% (289/369)	61% (233/380)	70% (203/289)	70% (248/356)	78% (255/326)	86% (276/322)	84% (264/316)	90%	●	86%	87%	89%	88%
Number of contacts	1866	1594	1959	1789	1488	1794	1428	1839	1598	<17K	●	N/A	N/A	N/A	N/A
Number of referrals in the month	334	325	286	314	276	396	298	343	330	N/A	●	N/A	N/A	N/A	N/A

Analysis: Whilst number of contacts to front door reduced from 1839 in January to 1598 in February, the number of referrals in the month remained similar (343 in January and 330 in February) suggesting a higher proportion of contacts were progressed to referral in the latest month.



Overview (2) highlighting February '23

Indicator	Jun-22	Jul-22	Aug-22	Sep-22	Oct-22	Nov-22	Dec-22	Jan-23	Feb-23	Target	RAG	Southampton 21/22	Statistical Neighbours	South East	England
Number of CLA at the end of the month	554	554	551	548	552	558	543	553	545	540	●	497	640	10480	80850
Number of children with an active Child in Need Plan not allocated to CWD (CIN*)	618	624	618	621	621	642	648	584	538	N/A	●	N/A	N/A	N/A	N/A
Number of children who are subject of a Child Protection Plan as at the end of month	426	389	389	355	315	301	302	288	301	406	●	N/A	N/A	N/A	N/A
Number of care leavers	218	226	212	221	204	249	252	252	279	N/A	●	N/A	N/A	N/A	N/A

Analysis: The number of children with an active children in need plan not allocated to CWD reduced from 584 in January to 538 in February. However, the number of children in child protection plans increased from 288 in January to 301 in February. 54% ICPCs happened in timescale and the service are addressing this by ensuring a CP advisor review of each late conference and safeguarding performance lead and reviewing the quality of recording.

The number of children in care decreased from 553 in January to 545 in February. This could be a result of the number of care leavers increasing over the same period from 252 in January to 279 in February.



Overview (1) highlighting February '23

Indicator	Jun-22	Jul-22	Aug-22	Sep-22	Oct-22	Nov-22	Dec-22	Jan-23	Feb-23	Target	RAG	Southampton 21/22	Statistical Neighbours	South East	England
Number of CLA at the end of the month	554	554	551	548	552	558	543	553	545	540	●	497	640	10480	80850
Rate of CLA per 10,000 under 18 population	112	112	111	111	111	113	110	112	110	100	●	96	100	53	67
Number of CLA at the end of the month who are UASC	24	21	24	27	31	36	35	37	37	<37	●	20	23	820	4070
Percentage of CLA for whom a visit has taken place within statutory timescales (6 weeks or less visits)	85% (473/554)	85% (470/554)	81% (449/551)	84% (462/548)	86% (472/552)	89% (494/558)	86% (465/543)	81% (447/553)	79% (431/545)	90%	●	N/A	N/A	N/A	N/A
Percentage of CLA children with an up to date review	98% (542/554)	98% (544/554)	99% (544/551)	100% (546/548)	99% (547/552)	99% (552/558)	98% (534/543)	98% (544/553)	97% (530/545)	95%	●	N/A	N/A	N/A	N/A
Percentage of children in care for at least 12 months for whom health assessments are up to date.	73% (294/405)	74% (303/411)	78% (317/408)	80% (342/426)	81% (351/433)	85% (368/432)	85% (361/423)	86% (367/427)	83% (351/421)	93%	●	83%	93%	89%	91%
Percentage of initial health assessments delivered within 20 working days of date child became looked after.	43% (3/7)	22% (5/23)	9% (1/11)	23% (3/13)	25% (2/8)	74% (14/19)	28% (5/18)	26% (5/19)	5% (1/20)	90%	●	N/A	N/A	N/A	N/A

Analysis: Our total children in care at month end decreased from 553 to 545 in February (rate per 10k 110), which remains slightly higher than our local target of 540 (rate per 10k of 100). Our UASC population is 37 and the data team are curious to know what further reporting we could be doing to support the lead in this area.

Percentage of children with an up-to-date review remains higher than local target at 97% but has shown small signs of delay since September '22. Health assessments on time have decreased from 86% to 83% in January, and initial health assessments within 20 working days is particularly low despite small numbers (1/20, 5%).



Overview (2) highlighting February '23

Indicator	Jun-22	Jul-22	Aug-22	Sep-22	Oct-22	Nov-22	Dec-22	Jan-23	Feb-23	Target	RAG	Southampton 21/22	Statistical Neighbours	South East	England
Percentage of CLA at end of month with 3 or more placements during the year	27% (149/554)	26% (143/554)	25% (136/551)	23% (126/548)	22% (123/552)	21% (116/558)	19% (105/543)	16% (91/553)	15% (82/545)	<10%	●	14%	10%	11%	9%
Number of CLA allocated to CWD	32	31	31	30	29	29	30	29	29	N/A	●	N/A	N/A	N/A	N/A
Number of CLA accommodated on S20 (exc UASC) as at the end of the month	28	33	28	26	25	30	26	28	28	N/A	●	N/A	N/A	N/A	N/A
Percentage of CLA with a permanence plan in place within 6 months of BLA	TBC	TBC	TBC	TBC	TBC	TBC	TBC	TBC	TBC	TBC	●	N/A	N/A	N/A	N/A
Number of Children Looked After (CLA) placed for adoption at period end	38	38	33	33	29	29	23	23	17	TBC	●	11	21	300	2270
Percentage of CLA placed in IFA placements as at the end of the month	25% (136/554)	25% (137/554)	25% (140/551)	26% (140/548)	26% (145/552)	26% (147/558)	28% (152/543)	28% (157/553)	29% (158/545)	<36%	●	N/A	N/A	N/A	N/A

Analysis: Number of children in care with 3 + moves in 12 months decreased from 16% to 15% in February which represents a 12 percentage point improvement since June 22 (27%), however this remains higher than our local target of <10% in line with the national average.

The number of children looked after that are placed for adoption as at month end decreased from 23 in January to 17 in February. This remains higher than our 21/22 DfE published figure but lower than our statistical neighbours average of 21.

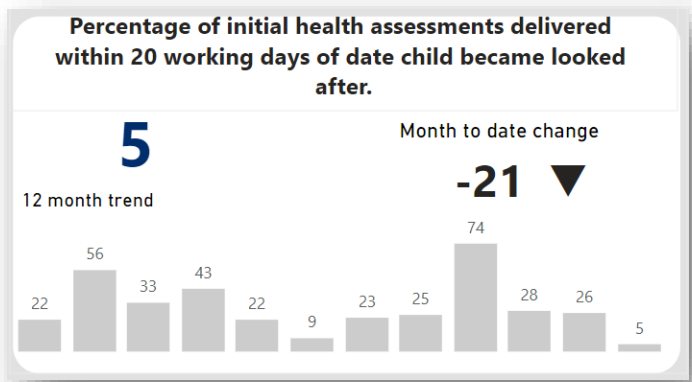
Children in care placed in IFA placement types increased from 28% to 29% in February, equivalent to one additional child. This figure remains consistently lower than the local target of <36%.

Robust Corporate Parenting

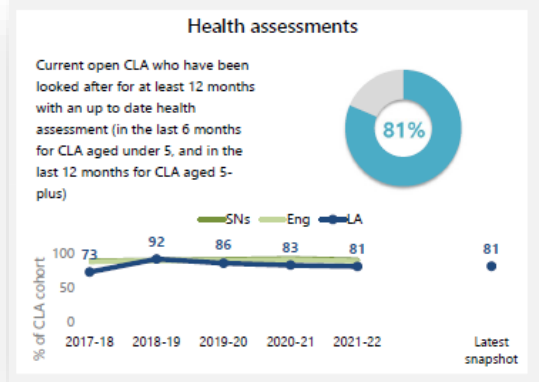
CLA Initial Health Assessments



KPI Dashboard (Feb '23)



ChAT (as at 6th March)



Analysis: For the priority area 'Robust Corporate Parenting' we have chosen to highlight the care leaver CLA initial health timeliness figure of 5% which reached a high of 74% in November but has steeply declined since, acknowledging the numbers within this cohort are much smaller and likely to be impacted by turbulence as a result (1/20, 5%).

Our CLA health assessment timeliness within 12 months or 6 months (depending on age) reported 83% in February KPI's, and 81% in our most recent ChAT report as at 6th March which is in line with the last two previous published financial years (83% in 20-21 and 81% in 21-22).



Quality Assurance

A city of opportunity where everyone thrives



42 Audits allocated across 9 Service Areas (PTC 6: BIT 6: SWF 9: Jigsaw 4: Fostering 4: Adoption 1: ICAS 4: YPS 2: C&FF 6)

- **5% of audits graded Outstanding**
- **42% of audits graded Good**
- **53% of audits graded as Requiring Improvement**



38 Audits completed

Management audit completion showed an improving picture in January, with over 90% of completed audits undertaken with social workers. However, there is more work to do to achieve the consistency that we require to get a solid understanding of practice.



January Audit Theme – Contextual Safeguarding

Service compliance has been supported by:

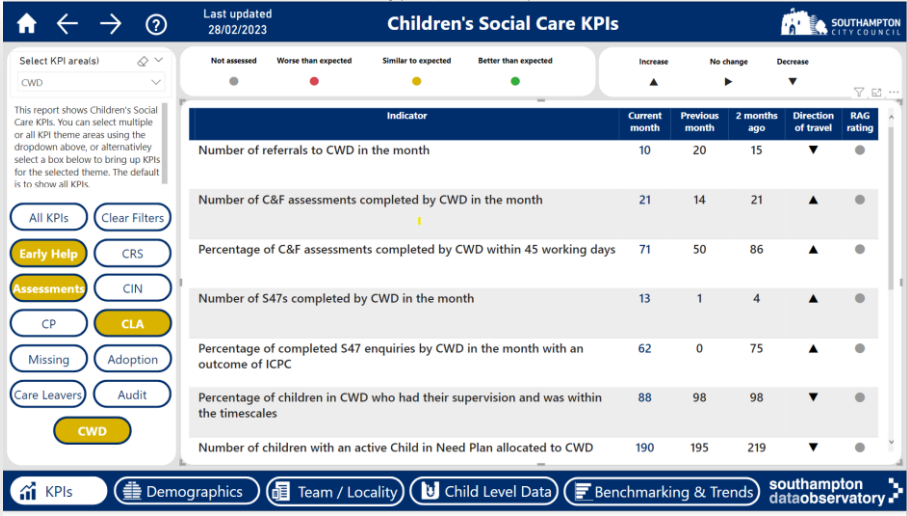
- Audit support sessions delivered by the service's audit coordinator
- A focus on audit activity in 4x practice manager workshops, delivered by service leads

The audit moderation process has been reviewed and relaunched in March 2023.

CSC KPI Dashboard Updates



1. 10 new CWD indicators
2. 4 new children and families first indicators
3. CLA Reviews due in the month on time
4. Assessments within 20 days





A city of opportunity where everyone thrives